

## Pressure Gauges - Natural Gas Differential Gauge

- Used for measuring difference between two separate pressure sources.
- Used with gas and liquids which do not attack stainless steel 316L.
- Filter clogging, flow rate and liquid level can be monitored.

Industry Sector: Petro-chemical plants, Mining industry, Water treatment plants and Hydraulics systems.



### Usage Properties

Operating Pressure (max.)	· Must not exceed full scale.
Accuracy Class	· CL ± % 10
Ambient Temperature	· - 20 ... + 60 °C
Protection Rate	· IP 65
Optimum Operating Range	· Between 0,0 x PN and 1,0 x PN
Over Pressure Limit	· PN x 1.25
Storage Temperature	· -40 ... +70 °C

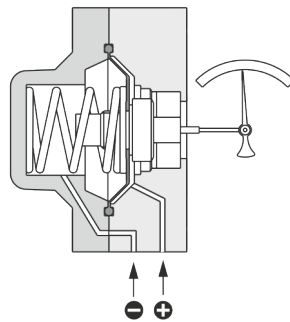
### Constructive Properties

Mounting Type	· Manifolds
Contact Types	· 1NO
Scale Unit	· mbar
Scale Range (PN)	· 0/600 · 0 - 1000 · 0/2000
Diaphragm	· Viton
Case	· Brass
Window	· Acrylic
Dial	· Aluminum
Pointer	· Aluminum

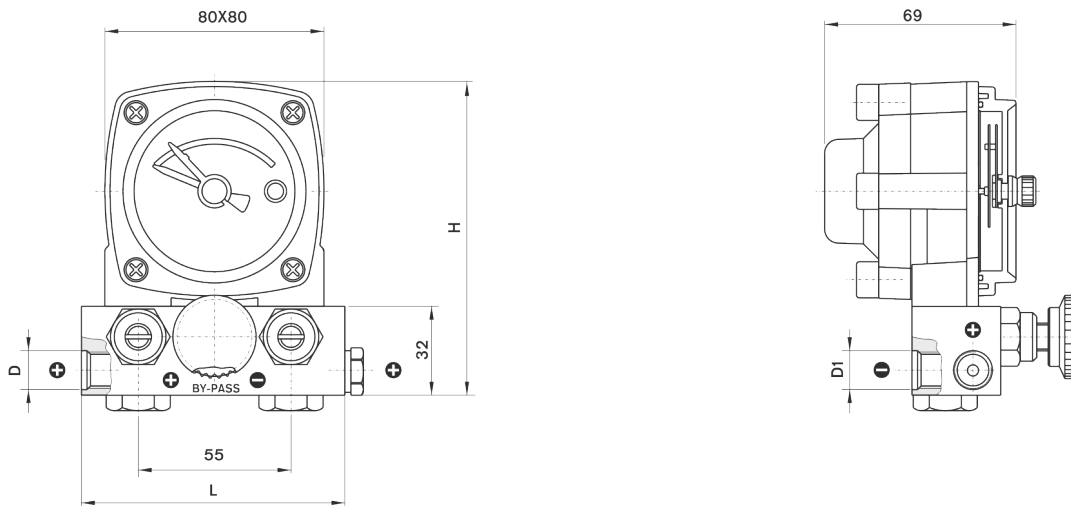
**Technical Drawings - Natural Gas Differential Gauge**

(mbar)	D	D1	L	H	gr.	Model #
0 ... 200	G 1/4" A	G 1/4" A	97	113	2 050	0594 151
0 ... 300						0594 171
0 ... 600						0594 201
0 ... 1000						0594 221
0 ... 2000						0594 241

DG-0594 / Kollektör



DG-0594 / Kollektör

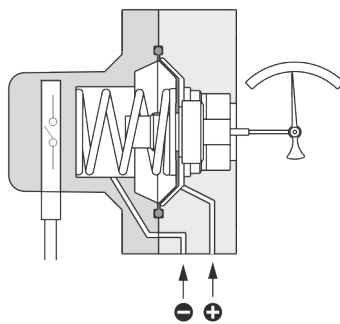


DG-0594 / Kollektör

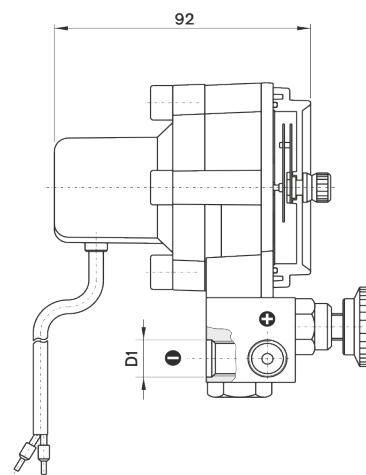
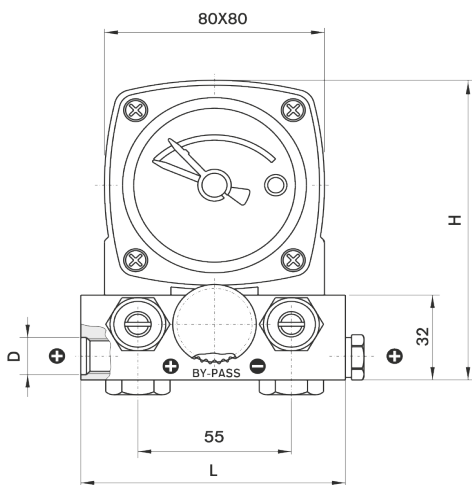
**Technical Drawings - Natural Gas Differential Gauge**

(mbar)	D	D1	L	H	gr.	Model #
0 ... 200	G 1/4" A	G 1/4" A	97	113	2 250	0595 151
0 ... 300						0595 171
0 ... 600						0595 201
0 ... 1000						0595 221
0 ... 2000						0595 241

DG-0595 / Kollektör



DG-0595 / Kollektör



DG-0595 / Kollektör