

## Safety Vents - Water Boiler Safety Valves



- This type of valves are used in water boilers to prevent damage due to pressure rise i water supply. By releasing excess pressure system operates in its nominal pressure ran
- Release pressure is factory set to customers request. Set pressure can not be altered user.

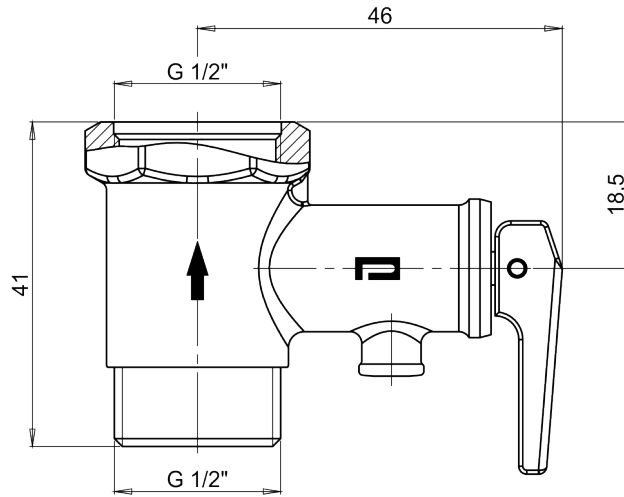
### Usage Properties

Conformity	· CE 0036
Fluid Temperature	· 110 °C
Storage Temperature	· -20 ... +60 °C
Max.Pressure	· PN 16

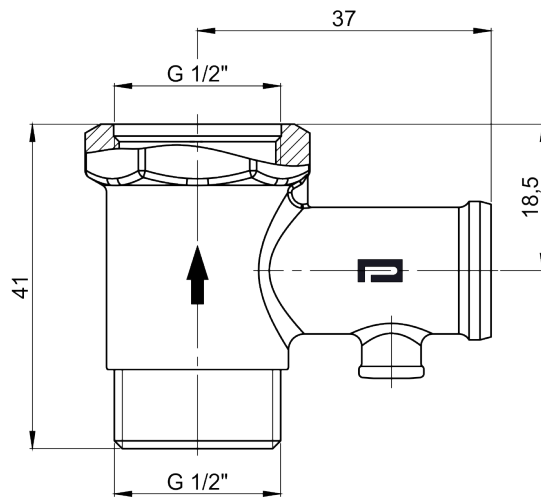
### Constructive Properties

Connection	· G 1/2" B
Discharge Connection	· G 1/2" B
Tension Spring	· Stainless Steel

**Technical Drawings - Water Boiler Safety Valves**



09731 /



09730 /